

PRODUCT INFORMATION PACKET



Model No: C145T17FK72A

Catalog No: 122091.00

..2HP..1800RPM.145JM.TEFC.230/460V.3PH.60HZ.CONT.40C..RIGID C FACE.....JM PUMP.....
JM



Regal and Leeson are trademarks of Regal Beloit Corporation or one of its affiliated companies.

©2018 Regal Beloit Corporation, All Rights Reserved. MC017097E



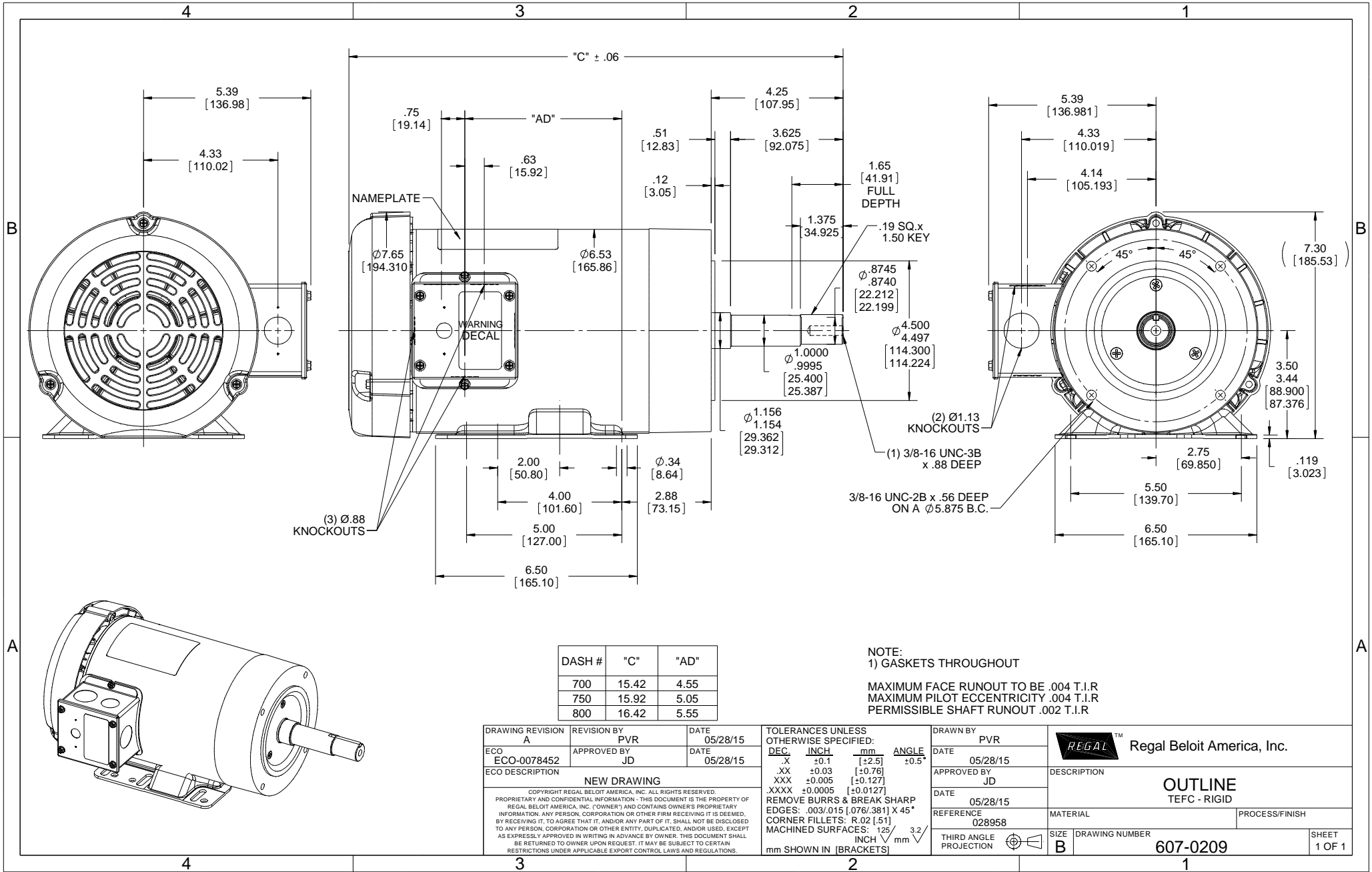


Nameplate Specifications

| | | | |
|----------------------------|------------------------------------|------------------------|-------------------|
| Output HP | 2 Hp | Output KW | 1.5 kW |
| Frequency | 60 Hz | Voltage | 230/460 V |
| Current | 5.8/2.9 A | Speed | 1745 rpm |
| Service Factor | 1.15 | Phase | 3 |
| Efficiency | 86.5 % | Duty | Continuous |
| Insulation Class | F | Design Code | B |
| KVA Code | L | Frame | 145JM |
| Enclosure | Totally Enclosed Fan Cooled | Overload Protector | No |
| Ambient Temperature | 40 °C | Drive End Bearing Size | 6206 |
| Opp Drive End Bearing Size | 6203 | UL | Recognized |
| CSA | Y | CE | N |
| IP Code | 43 | | |

Technical Specifications

| | | | |
|-----------------------|------------------------------------|-----------------------|------------------------|
| Electrical Type | Squirrel Cage Induction Run | Starting Method | Across The Line |
| Poles | 4 | Rotation | Reversible |
| Mounting | Rigid base | Motor Orientation | HORIZONTAL |
| Drive End Bearing | BALL | Opp Drive End Bearing | BALL |
| Frame Material | Rolled Steel | Shaft Type | JM |
| Overall Length | 16.42 in | Frame Length | 8.00 in |
| Shaft Diameter | 0.875 in | Shaft Extension | 4.21 in |
| Assembly/Box Mounting | F1 ONLY | | |
| Outline Drawing | 607-0209-800 | Connection Diagram | 005010.01 |



| DASH # | "C" | "AD" |
|--------|-------|------|
| 700 | 15.42 | 4.55 |
| 750 | 15.92 | 5.05 |
| 800 | 16.42 | 5.55 |

NOTE:
1) GASKETS THROUGHOUT

MAXIMUM FACE RUNOUT TO BE .004 T.I.R
MAXIMUM PILOT ECCENTRICITY .004 T.I.R
PERMISSIBLE SHAFT RUNOUT .002 T.I.R

| | | |
|---|--------------------|------------------|
| DRAWING REVISION A | REVISION BY PVR | DATE 05/28/15 |
| ECO ECO-0078452 | APPROVED BY JD | DATE 05/28/15 |
| ECO DESCRIPTION NEW DRAWING | | |
| <small>COPYRIGHT REGAL BELOIT AMERICA, INC. ALL RIGHTS RESERVED. PROPRIETARY AND CONFIDENTIAL INFORMATION - THIS DOCUMENT IS THE PROPERTY OF REGAL BELOIT AMERICA, INC. ("OWNER") AND CONTAINS OWNER'S PROPRIETARY INFORMATION. ANY PERSON, CORPORATION OR OTHER FIRM RECEIVING IT IS DEEMED, BY RECEIVING IT, TO AGREE THAT IT, AND/OR ANY PART OF IT, SHALL NOT BE DISCLOSED TO ANY PERSON, CORPORATION OR OTHER ENTITY, DUPLICATED, AND/OR USED, EXCEPT AS EXPRESSLY APPROVED IN WRITING IN ADVANCE BY OWNER. THIS DOCUMENT SHALL BE RETURNED TO OWNER UPON REQUEST. IT MAY BE SUBJECT TO CERTAIN RESTRICTIONS UNDER APPLICABLE EXPORT CONTROL LAWS AND REGULATIONS.</small> | | |

| | | | |
|---|---------|-----------|-------|
| TOLERANCES UNLESS OTHERWISE SPECIFIED: | | | |
| DEC | INCH | mm | ANGLE |
| .X | +0.1 | [+2.5] | ±0.5° |
| .XX | ±0.03 | [±0.76] | |
| .XXX | ±0.005 | [±0.127] | |
| .XXXX | ±0.0005 | [±0.0127] | |
| REMOVE BURRS & BREAK SHARP EDGES: .003/.015 [.076/.381] X 45° | | | |
| CORNER FILLETS: R.02 [.51] | | | |
| MACHINED SURFACES: 125/3.2 | | | |
| mm SHOWN IN [BRACKETS] | | | |

| | |
|------------------------|------------------|
| DRAWN BY PVR | DATE 05/28/15 |
| APPROVED BY JD | DATE 05/28/15 |
| REFERENCE 028958 | |
| THIRD ANGLE PROJECTION | |

| | |
|----------------------------|--------------------------------|
| Regal Beloit America, Inc. | |
| DESCRIPTION | OUTLINE TEFC - RIGID |
| MATERIAL | PROCESS/FINISH |
| SIZE B | DRAWING NUMBER 607-0209 |
| | SHEET 1 OF 1 |

005010-01

VIEW FROM OUTSIDE OF MOTOR AT SWITCH END.



| VOLTAGE | L1 | L2 | L3 | JOIN & INSULATE |
|---------|-------|-------|-------|-------------------------------|
| HIGH | T1 | T2 | T3 | (T4,T7) (T5,T8) (T6,T9) |
| LOW | T1,T7 | T2,T8 | T3,T9 | T4,T5,T6 |

| | | | | | | | | | | | |
|--|-----------------------|--------------|-----|--------------------------------|----------|---|--|--------------------|-----------|-------------|------|
| | | | | TOLERANCES UNLESS SPECIFIED | | REGAL ™ Regal Beloit America, Inc. | | DRAWN RDW 04/12/02 | | | |
| | | | | DEC. | INCHES | | | CHK | | | |
| | | | | .X | ±.1 | | | APPD | | | |
| | | | | .XX | ±.01 | TITLE EXTERNAL WIRING DIAGRAM 3 PHASE W/O PROTECTOR | | SCALE 1=1 | | | |
| | | | | .XXX | ±.005 | | | REF FIG.2-51 | | | |
| A | UPDATED TO REGAL LOGO | SAJ 06/26/15 | AJY | .XXXX | ±.0005 | MAT'L DECAL - 004014 | | FMF | | | |
| NO. | REVISION | BY & DATE | CHK | ANG | ±1/2" | FINISH | | PREV | | | |
| THIS DRAWING IN DESIGN AND DETAIL IS OUR PROPERTY AND MUST NOT BE USED EXCEPT IN CONNECTION WITH OUR WORK ALL RIGHTS OF DESIGN AND INVENTION ARE RESERVED THIS IS AN ELECTRONICALLY GENERATED DOCUMENT - DO NOT SCALE THIS PRINT | | | | RFP | 04/12/02 | CAD FILE | | 00501001 | SIZE | DRAWING NO. | REV. |
| | | | | DIST | BRF-NLV | | | A | 005010-01 | A | |



CERTIFICATION DATA SHEET

1051 CHEYENNE AVE.
GRAFTON, WI 53024
PH. 262-377-8810

CONN. DIAGRAM: 005010.01

CATALOG #: 122091.00

OUTLINE: 607-0209-800

MOUNTING: F1 ONLY

WINDING #: T634340 FR 3 G

TYPICAL MOTOR PERFORMANCE DATA

| HP | KW | SYNC, RPM | F.L. RPM | FRAME | ENCLOSURE | KVA CODE | DESIGN |
|----|------|-----------|----------|-------|-----------|----------|--------|
| 2 | 1.49 | 1800 | 1745 | 145JM | TEFC | L | B |

| PH | HZ | VOLTS | AMPS | START TYPE | DUTY | INSL | S.F. | AMB°C |
|----|----|---------|---------|-----------------|------------|------|------|-------|
| 3 | 60 | 230/460 | 5.8/2.9 | ACROSS THE LINE | CONTINUOUS | F4 | 1.15 | 40 |

| | | | | | | | |
|----------------|------|---------------|------|---------------|------|----------|-----------------|
| FULL LOAD EFF: | 86.5 | 3/4 LOAD EFF: | 85.5 | 1/2 LOAD EFF: | 83.5 | GTD. EFF | ELEC. TYPE |
| FULL LOAD PF: | 75.6 | 3/4 LOAD PF: | 64 | 1/2 LOAD PF: | 52 | 0 | SQ CAGE IND RUN |

| F.L. TORQUE | LOCKED ROTOR AMPS | L.R. TORQUE | B.D. TORQUE | F.L. RISE°C |
|-------------|-------------------|-------------|-------------|-------------|
| 6 LB-FT | 53.2 / 26.6 | 24.6 LB-FT | 410 % | 28.8 LB-FT |
| | | | | 480 % |

| SOUND PRESSURE @ 3 FT. | SOUND POWER | ROTOR WK^2 | MAX. WK^2 | SAFE STALL TIME | STARTS / HOUR | APPROX. MOTOR WGT |
|------------------------|-------------|--------------|-------------|-----------------|---------------|-------------------|
| 0 DBA | 10 DBA | 0.16 LB-FT^2 | 0.2 LB-FT^2 | 0 SEC. | 0 | 0 LBS. |

*** SUPPLEMENTAL INFORMATION ***

| DE BRACKET TYPE | ODE BRACKET TYPE | MOUNT TYPE | ORIENTATION | SEVERE DUTY | HAZARDOUS LOCATION | DRIP COVER | SCREENS | PAINT |
|-----------------|------------------|------------|-------------|-------------|--------------------|------------|---------|------------------------|
| C-FACE | STANDARD | RIGID | HORIZONTAL | FALSE | NONE | FALSE | NONE | BLUE - LEESON (ENAMEL) |

| BEARINGS DE ODE | GREASE | SHAFT TYPE | SPECIAL DE | SPECIAL ODE | SHAFT MATERIAL | FRAME MATERIAL |
|-----------------|------------|------------|------------|-------------|--------------------------|----------------|
| BALL BALL | POLYREX EM | JM | NONE | NONE | 1144 STRESSPROOF (C-223) | ROLLED STEEL |
| 6206 | 6203 | | | | | |

| THERMO-PROTECTORS | | | | | THERMISTORS | CONTROL | SPACE HEATERS |
|-------------------|------------|----------|----------|------|-------------|---------|---------------|
| THERMOSTATS | PROTECTORS | WDG RTDS | BRG RTDS | | NONE | FALSE | NONE |
| NONE | NOT | NONE | NONE | NONE | NONE | FALSE | NONE |

*

INVERTER TORQUE: NONE
INV. HP SPEED RANGE: NONE

| ENCODER: | NONE | NONE | PPR |
|----------|------|------|-----|
| NONE | NONE | NONE | PPR |

N
O
T
E
S

| | | | |
|--------|-------|----------|--------|
| BRAKE: | NONE | NONE | NONE |
| | NONE | P/N NONE | NONE |
| | NONE | NONE | NONE |
| | FT-LB | NONE | V NONE |
| | | NONE | Hz |

Data Sheet

Date: 1/17/2018

122091.00

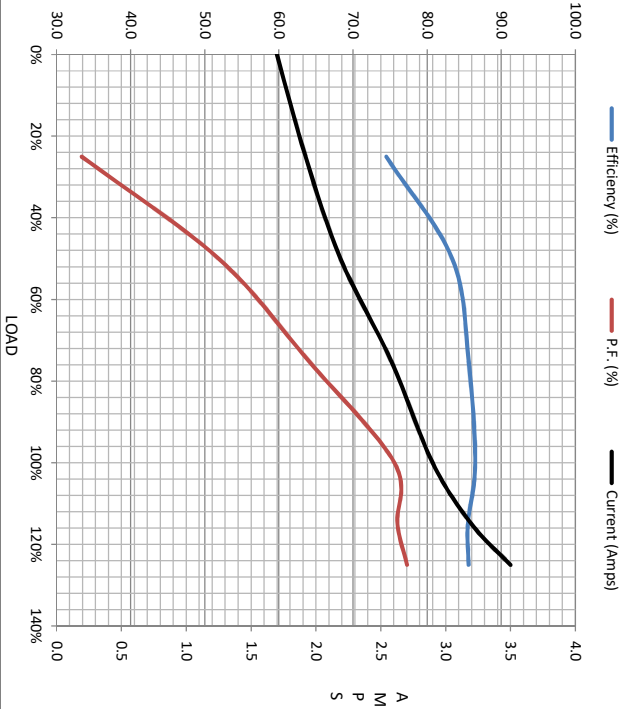


Data @ 460 V

| Load | 0% | 25% | 50% | 75% | 100% | 115% | 125% | LR | |
|----------------|------|------|------|------|------|-------|------|------|--|
| Current (Amps) | 1.70 | 1.92 | 2.19 | 2.58 | 2.90 | 3.2 | 3.5 | 26.5 | |
| Torque (ft-lb) | 0.00 | 1.50 | 3.0 | 4.5 | 6.0 | 6.5 | 7.5 | 18.8 | |
| RPM | 1800 | 1787 | 1774 | 1763 | 1751 | 1,730 | 1732 | 0 | |
| Efficiency (%) | | 74.5 | 83.4 | 85.6 | 86.5 | 85.5 | 86.6 | | |
| P.F. (%) | 7.1 | 33.4 | 51.9 | 64.0 | 75.6 | 76.0 | 77.3 | 42.0 | |

Motor Speed Data

| | LR | Pull-Up | BD | Rated | Idle | Information Block | | | | |
|----------------|------|---------|------|-------|------|----------------------------|-------------|--------|--|--|
| Speed (RPM) | 0 | 775 | 1085 | 1751 | 1800 | HP | 2.0 | | | |
| Current (Amps) | 26.5 | 24.4 | 14.2 | 2.90 | 1.70 | Sync. RPM | 1800 | | | |
| Torque (ft-lb) | 18.8 | 15.0 | 24.6 | 6.0 | 0.00 | Frame | 140 | | | |
| | | | | | | Enclosure | TEFC | | | |
| | | | | | | Construction | TFR | | | |
| | | | | | | Voltage | 230/460 | V | | |
| | | | | | | Frequency | 60 | Hz | | |
| | | | | | | Design | A | | | |
| | | | | | | LR Code letter | L | | | |
| | | | | | | Service Factor | 1.15 | | | |
| | | | | | | Temp Rise @ FL | 53 | °C | | |
| | | | | | | Duty | CONT | | | |
| | | | | | | Ambient | 40 | °C | | |
| | | | | | | Elevation | 1,000 | feet | | |
| | | | | | | Rotor/Shaft wk² | 0.16 | Lb-Ft² | | |
| | | | | | | Ref Wdg | T634340 | FR | | |
| | | | | | | Sound Pressure @ 1M | 65 | dB(A) | | |
| | | | | | | VFD Rating | NONE | | | |
| | | | | | | Outline Dwg | 6074209-800 | | | |
| | | | | | | Conn. Diag | 005010.01 | | | |
| | | | | | | Additional Specifications: | | | | |
| | | | | | | | | | | |
| | | | | | | | | | | |
| | | | | | | | | | | |
| | | | | | | | | | | |
| | | | | | | | | | | |
| | | | | | | | | | | |
| | | | | | | | | | | |
| | | | | | | | | | | |
| | | | | | | | | | | |



| R1 | R2 | X1 | X2 | Xm |
|--------|--------|--------|--------|--------|
| 0.0000 | 0.0000 | 0.0000 | 0.0000 | 0.0000 |

EQUIV CKT (OHMS / PHASE)

0

Speed - Torque Curve

